



CARBON FOOTPRINT REPORT 2024

Carbon Emissions Footprint Report for: Global City Futures Ltd.

Reporting period: 1 January 2024 – 31 December 2024

Prepared date: 07.03.2025

Prepared by: Ade Adewumi / Andrew Moss Robinson

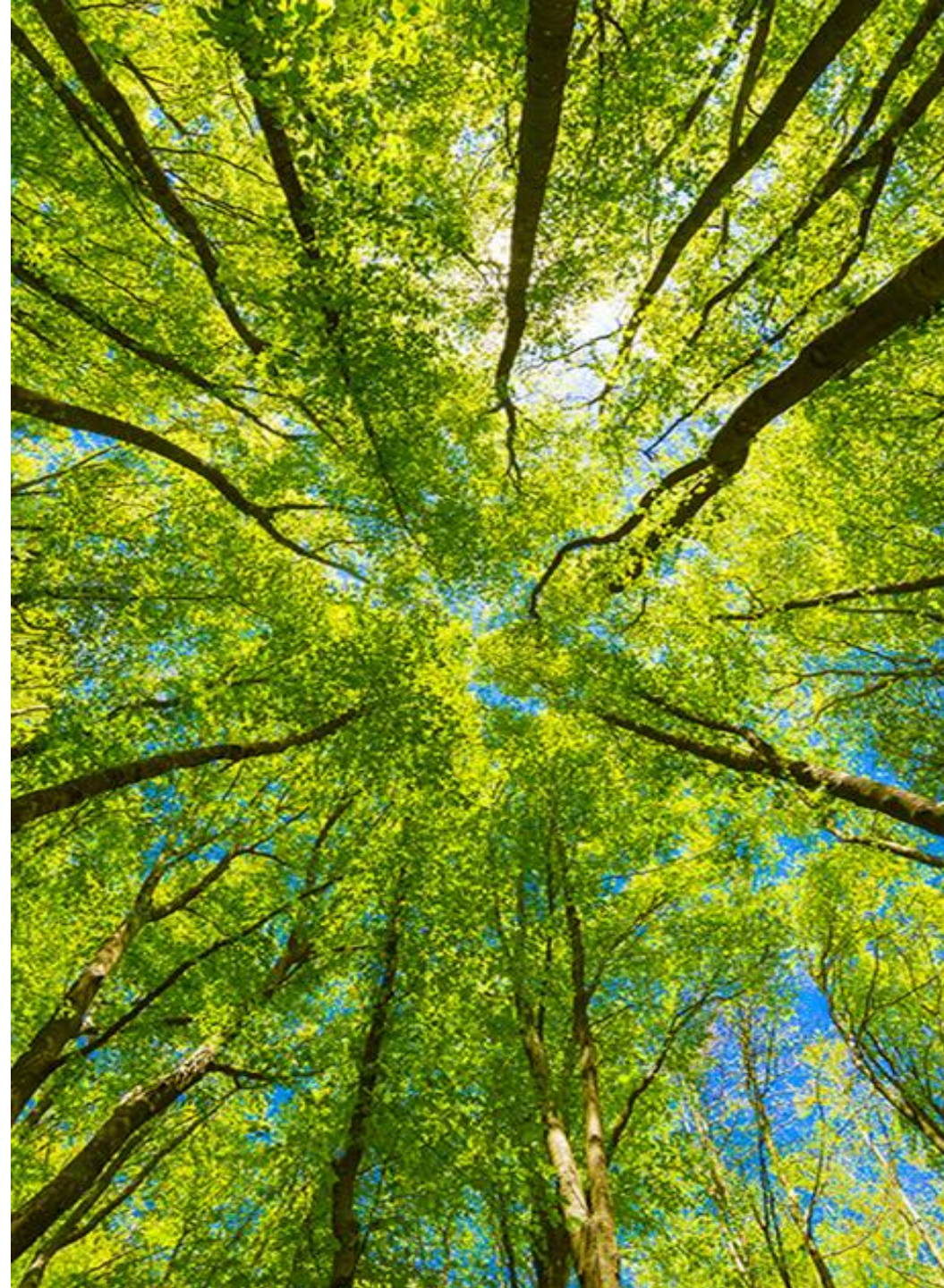
©2025 CARBON SENSE LTD
1ST FLOOR OFFICES, 10 MARKET PLACE, PENZANCE,
CORNWALL, TR182JA
COMPANY NO. 14142132
www.makecarbonsense.co.uk

Report Contents

- **Methodology and boundaries**
- **Company overview**
- **Baseline emissions report;**
 - **Scope breakdown**
 - **Intensity Metrics**
 - **Energy & Fuels**
 - **Business Travel**
 - **Employee Commuting**
 - **Detailed Scope 3**
- **Results Summary**
- **Assessors statement and comments**

Disclaimer:

This report has been prepared for Global City Futures Ltd. We have taken all reasonable care to ensure that the facts stated herein are true and accurate in all material aspects. No liability of any kind is assumed by Carbon Sense Ltd. or any of its directors, officers, employees, advisors or agents about any such opinions, projections, assumptions or any other information contained in, or otherwise concerning this report.





Quantification & Reporting Methodology

Carbon emissions are calculated using the UK Government published carbon conversion factors relevant to the reporting period. Our carbon reduction plans follow the Public Procurement Notice (PPN 06/21) guidance, and where possible, additional criteria and narrative is included tailored to each organisation.

Organisational Boundary

Global City Futures Ltd. has no subsidiaries nor parent companies to be concerned with, so the organisational boundary is defined as solely the organisation **Global City Futures Ltd.**

Operational Control Methodology has been applied, meaning we endeavour to include all emissions over which **Global City Futures Ltd.** have Operational Control.

For the purposes of this Carbon Footprint, we are including Scope 1, Scope 2 and key categories of Scope 3 detailed below.

Operational Scopes

Emissions from Scope 1 and 2 have been measured including key Scope 3 categories: **Energy & Fuel / Business Travel/ Employee Commuting/ Waste / Home Working**

Standard and Methodology Used

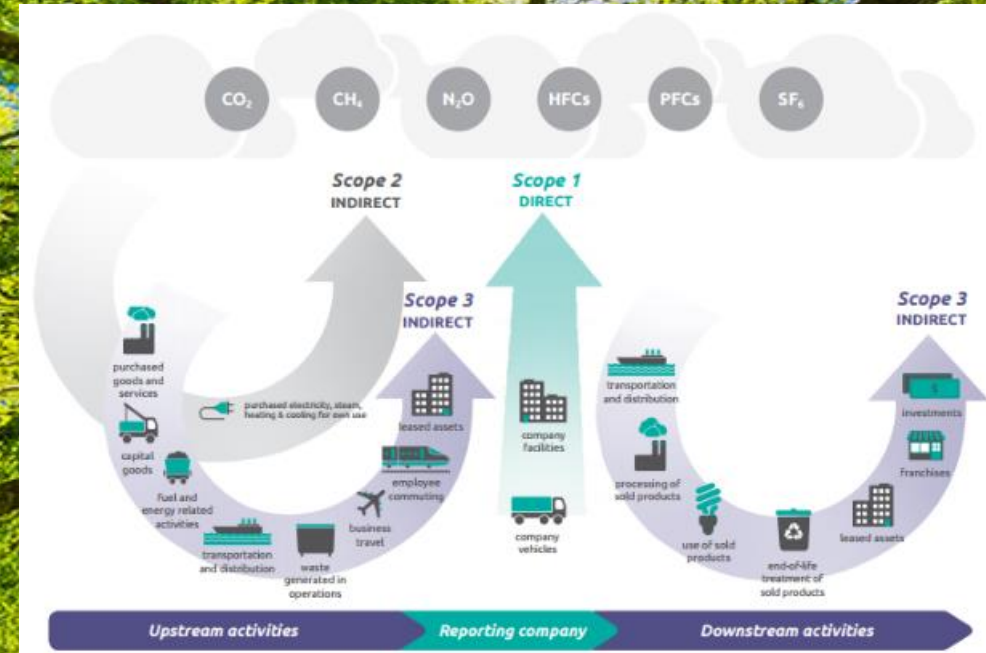
Global City Futures Ltd. categorises its Greenhouse Gas (GHG) Emissions as Scope 1, 2 or 3 as referred to in the Greenhouse Gas Protocol. Emissions have been calculated using the more accurate volume/supplier specific data.

The emissions have then been calculated using various conversion factors as evidenced and outlined in the workbook. As more accurate data is received, it is recommended to continuously and/or annually review this process.

Data Quality / Confidence

The data used to generate this report has been collected from various sources from within the company. These emissions have been converted to CO₂e using published GHG conversion factors.

[Greenhouse gas reporting: conversion factors 2023 - GOV.UK \(www.gov.uk\)](https://www.gov.uk/government/publications/greenhouse-gas-reporting-conversion-factors-2023)



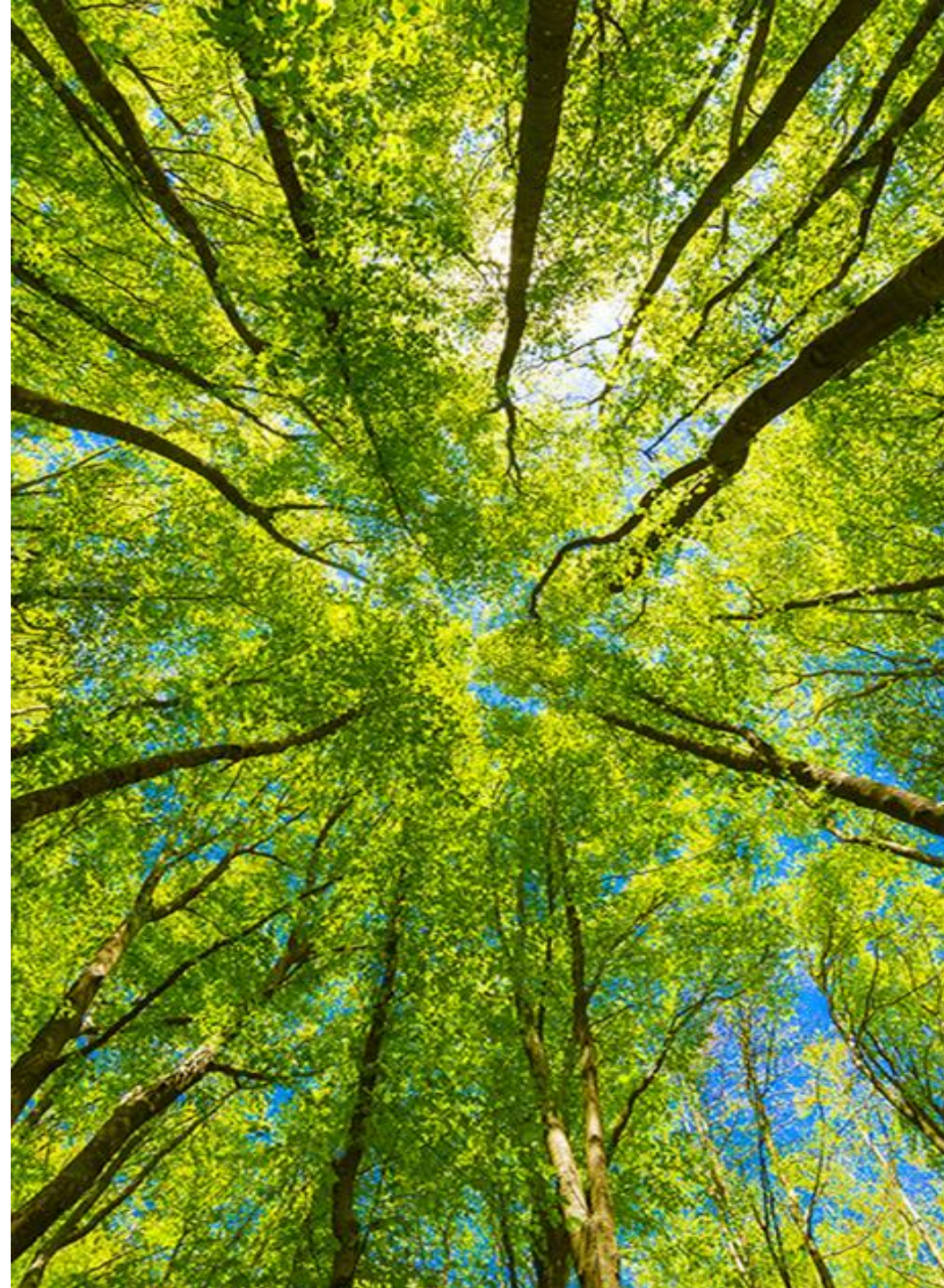
Company Overview

Reporting Period:	January 2024 – December 2024
Industry	82990 - Other business support service activities not elsewhere classified
No. of staff	12
No. of sites - Owned	0
No. of sites - Leased	1
No. of Company Vehicles - Owned	0
No. of Company Vehicles - Leased	1

Global City Futures Ltd. is a Private Limited Company (**10769046**) registered in England & Wales with a registered address of: **The Mount, 72 Paris Street, Exeter, EX1 2JY**

Global City Futures Ltd. is a professional consultancy which designs and delivers innovative and profitable low carbon developments for 21st Century cities.

We partner with public and private sector organisations to help cities take action for a sustainable future. We offer change management, innovation in procurement, financial structuring and professional services which take the complex challenges of urbanisation and deliver tailored, effective, people-centric solutions.



Baseline Reporting Period: 1 January 2024 – 31 December 2024

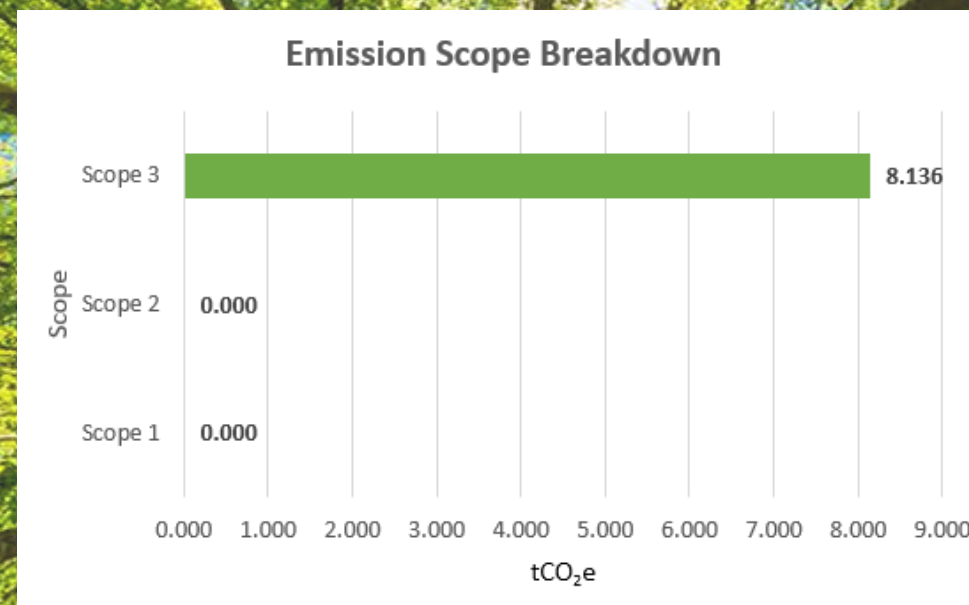
Baseline Emissions Reporting: 2024	
Additional Details relating to the Baseline Direct/Indirect Emissions calculations.	
Baseline year emissions:	
EMISSIONS	TOTAL (tCO ₂ e)
Scope 1	0.00
Scope 2	0.00
Scope 3	8.136
Total Emissions	8.136 tCO₂e

Direct emissions = 0.000 tCO₂e

Direct emissions are produced by sources which are owned or controlled by the reporting organisation and include burning oil or gas for heating, and fuel consumption as a result of business travel or distribution.

Indirect emissions = 8.136 tCO₂e

Indirect emissions result from a company's upstream and downstream activities. These are typically from outsourced/contract manufacturing, and products and the services offered by the organisation. Indirect emissions correspond to scopes 2 and 3 of the GHG Protocol.



Carbon Emissions – Intensity Metrics

An intensity metric is a measurement used to express the carbon emissions or greenhouse gas emissions of a company or organisation in relation to a specific unit of output or activity. These metrics help assess the environmental efficiency of the company's operations and can be used to track progress toward emission reduction goals.

Per Employee	0.678 tCO₂e
Per £1000 Turnover	0.00001 tCO₂e
Per m2 Office Space	0.123 tCO₂e

Energy & Fuels

These are emissions that come from sources the company owns or controls including fuels burned for heating, power , factory emissions, electricity, steam and cooling.

Electricity	Awaiting data
Gas	Awaiting data
Fuel	Awaiting data
Transmission & Distribution	Awaiting data
Total	-



Business Travel

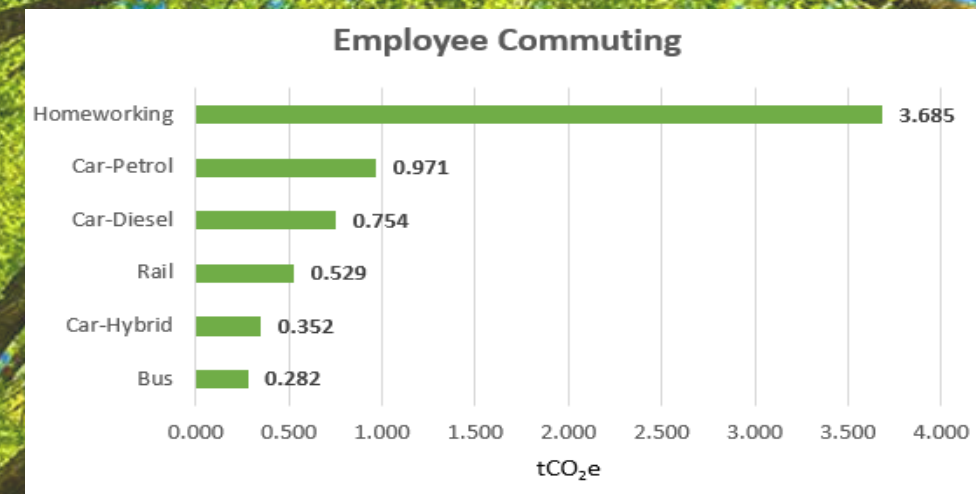
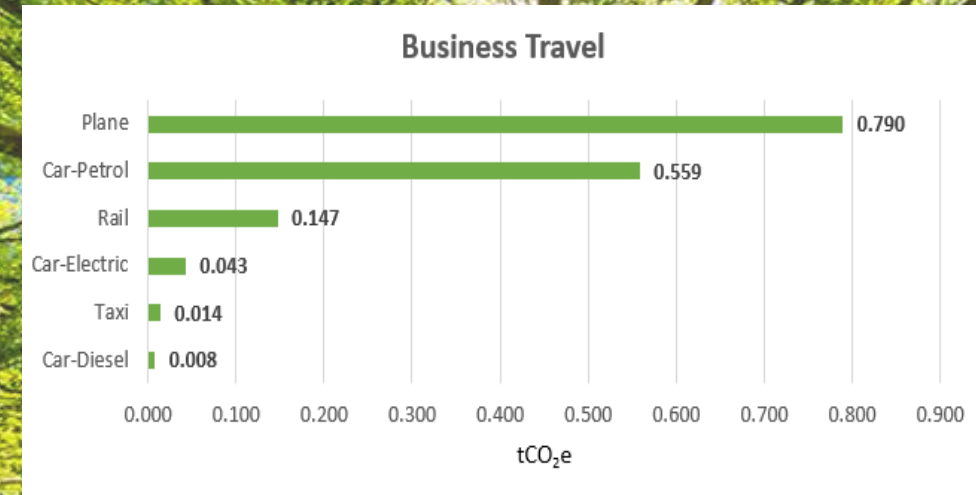
These are emissions from employee flights, hotels, and transport for activities related to work.

Plane	0.790 tCO ₂ e
Car-Petrol	0.559 tCO ₂ e
Rail	0.147 tCO ₂ e
Car-Electric	0.043 tCO ₂ e
Taxi	0.014 tCO ₂ e
Car-Diesel	0.008 tCO ₂ e
Total	1.561 tCO₂e

Employee Commuting

These are emissions from employee travel to and from work.

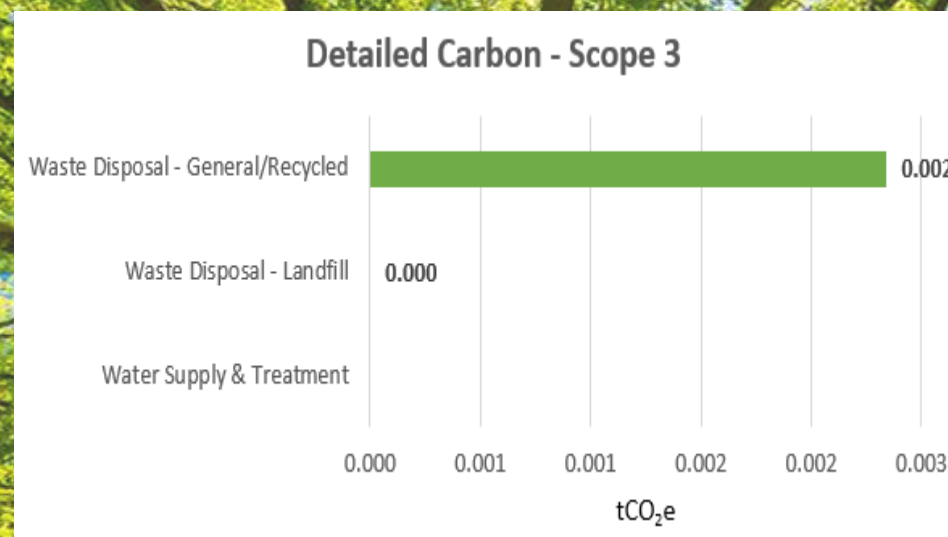
Homeworking	3.685 tCO ₂ e
Car-Petrol	0.971 tCO ₂ e
Car-Diesel	0.754 tCO ₂ e
Rail	0.529 tCO ₂ e
Car-Hybrid	0.352 tCO ₂ e
Bus	0.282 tCO ₂ e
Total	6.573 tCO₂e



Other Scope 3 Emissions

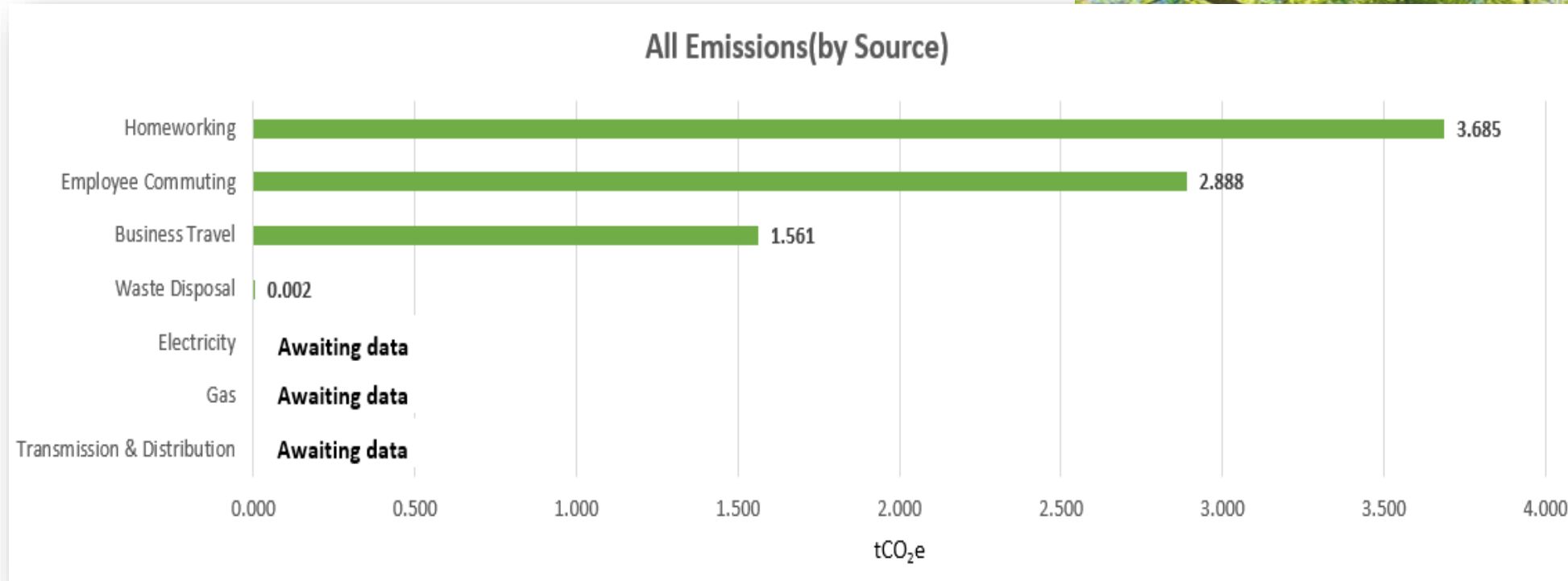
These are emissions measured from daily operations. Scope 3 emissions recorded here include sources that the reporting company couple feasible measure at the time of audit and may not include all categories.

Waste Disposal-General/Recycled	0.002 tCO ₂ e
Waste Disposal-Landfill	0.000 tCO ₂ e
Water Supply & Treatment	No data
Total	0.002 tCO₂e



All Measured Emissions

The chart includes all measure emissions ranked highest to lowest to help identify priority areas and plan to mitigate within the associated carbon reduction plan.



Assessors Comments

Carbon Sense Ltd. has supported in the collection of the carbon emissions data for **Global City Futures Ltd.** for the period **1 January 2024 to 31 December 2024**. We have reviewed data provided to us that had been calculated using an activity or spend based methodology (if sufficient data is not available) and quantified into categories disclosed in the report.

In our opinion, **8.136 Tonnes of CO₂e** represents a good indication of carbon emissions in accordance with the operational scopes outlined in this report and GHG Protocols defined by the organisations boundaries. This report reflects a fair proportion of Scope 1 & 2 emissions including a number of categories of Scope 3 emissions that have been listed in report and technically feasible to measure.

Global City Futures Ltd. is committed to measuring and acting to reduce its emissions in all 3 Scopes in line with its sustainability goals and net zero targets and committing to;

- ✓ Achieve Net Zero in line with the Science Based targets set out by the UNFCCC - To achieve Net Zero no later than 2050 and target a 50% reduction in emissions by 2030
- ✓ Set realistic short- and long-term targets that are designed to achieve our Net Zero commitments
- ✓ Report the total Greenhouse Gas emissions of our business regularly and accurately
- ✓ Take practical steps to collect and report activity where appropriate and where concise data is available

